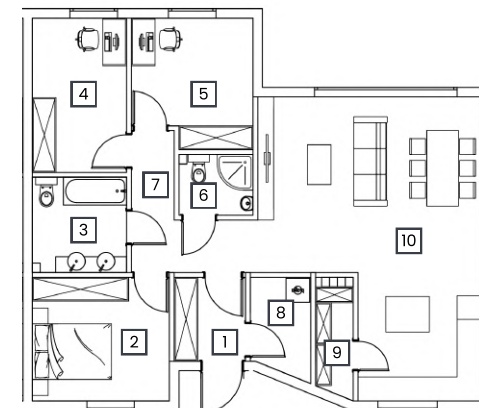
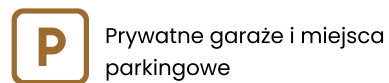
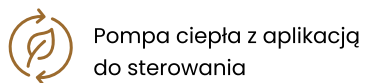


Nr domu  
5a

Pow. m<sup>2</sup>  
88,45 m<sup>2</sup>

L. pokoi  
4

Poziom  
Parter



| NR               | POMIESZCZENIE   | POW.                 |
|------------------|-----------------|----------------------|
| 1                | Wiatrołap       | 3,80 m <sup>2</sup>  |
| 2                | Sypialnia       | 10,76 m <sup>2</sup> |
| 3                | łazienka        | 5,71 m <sup>2</sup>  |
| 4                | Pokój           | 9,23 m <sup>2</sup>  |
| 5                | Pokój           | 9,44m <sup>2</sup>   |
| 6                | łazienka        | 2,86 m <sup>2</sup>  |
| 7                | Korytarz        | 6,64 m <sup>2</sup>  |
| 8                | Pom. techniczne | 3,68 m <sup>2</sup>  |
| 9                | Spizarnia       | 2,78 m <sup>2</sup>  |
| 10               | Salon z aneksem | 34,90 m <sup>2</sup> |
| Suma powierzchni |                 | 88,45 m <sup>2</sup> |