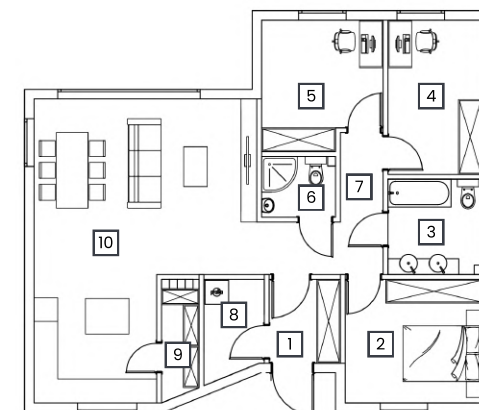
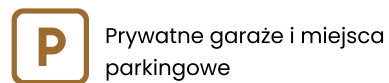
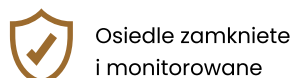
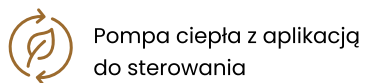


**Nr domu**  
**5b**

**Pow. m<sup>2</sup>**  
**88,45 m<sup>2</sup>**

**L. pokoi**  
**4**

**Poziom**  
**Parter**



NR	POMIESZCZENIE	POW.
1	Wiatrołap	3,80 m <sup>2</sup>
2	Sypialnia	10,76 m <sup>2</sup>
3	łazienka	5,71 m <sup>2</sup>
4	Pokój	9,23 m <sup>2</sup>
5	Pokój	9,44 m <sup>2</sup>
6	łazienka	2,86 m <sup>2</sup>
7	Korytarz	6,64 m <sup>2</sup>
8	Pom. techniczne	3,68 m <sup>2</sup>
9	Spizarnia	2,78 m <sup>2</sup>
10	Salon z aneksem	34,90 m <sup>2</sup>
Suma powierzchni		88,45 m <sup>2</sup>