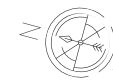
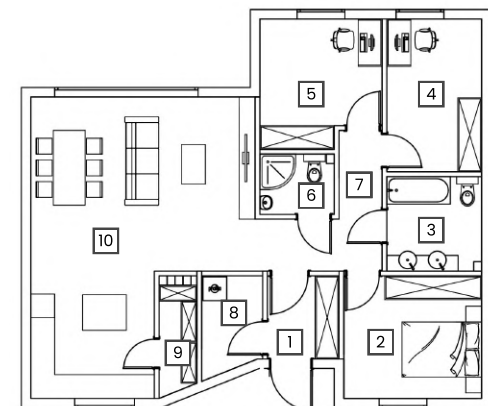
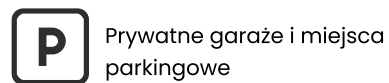
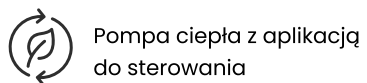


Nr domu
2a

Pow. m²
89,80 m²

L. pokoi
4

Poziom
Parter



NR	POMIESZCZENIE	POW.
1	Wiatrołap	3,80 m ²
2	Pom.techniczne	3,68 m ²
3	Spizarnia	2,78 m ²
4	Salon z aneksem	34,90 m ²
5	Korytarz	6,64 m ²
6	WC	2,86 m ²
7	Pokój	9,44 m ²
8	Pokój	9,23 m ²
9	Łazienka	5,71 m ²
10	Sypialnia	10,76 m ²
Suma powierzchni		89,80 m ²